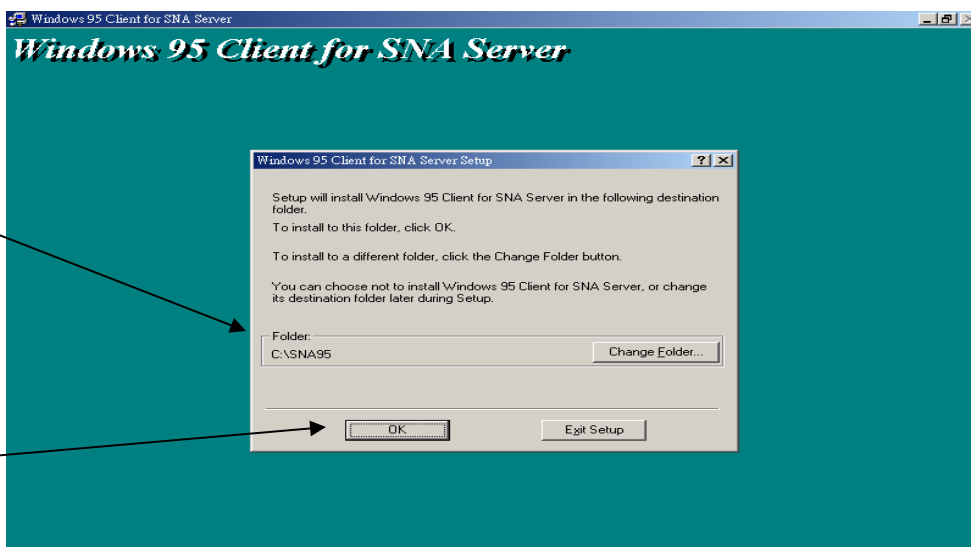
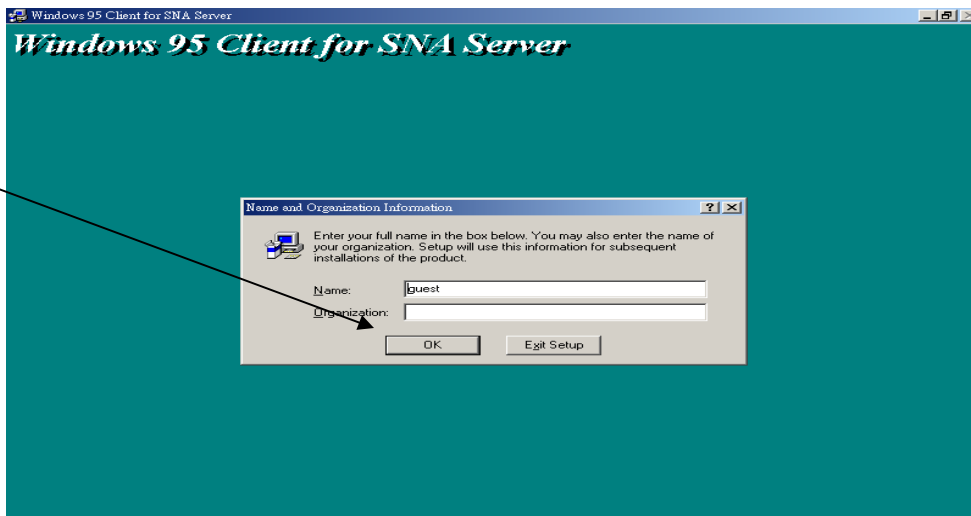
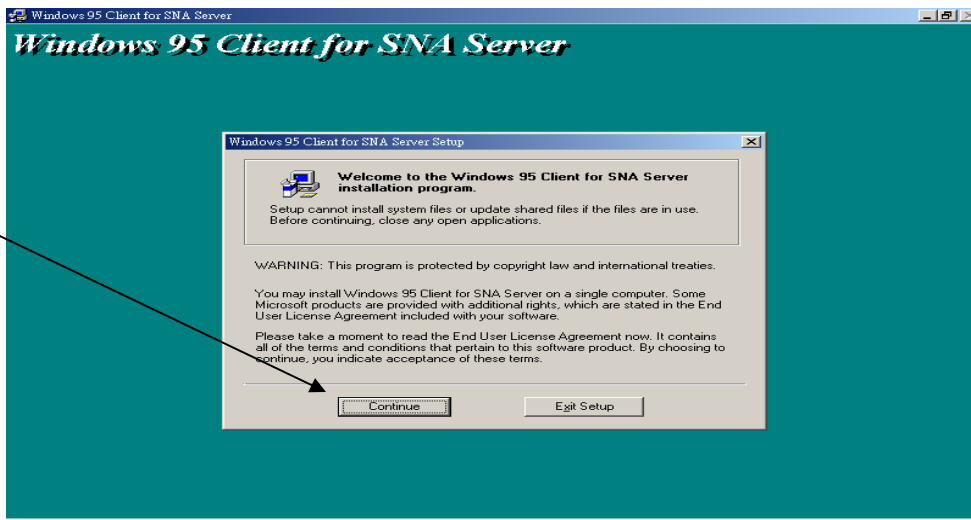
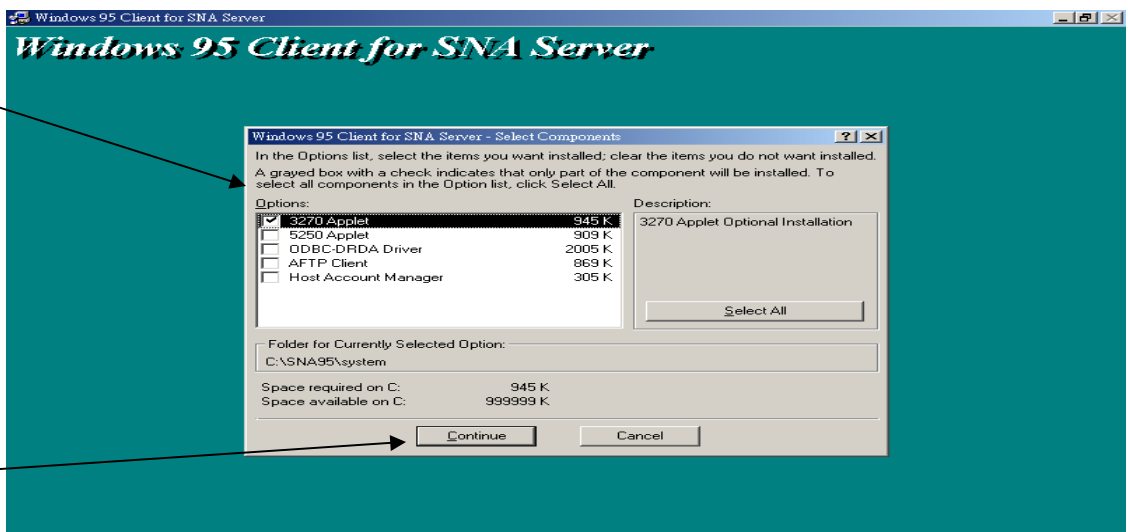
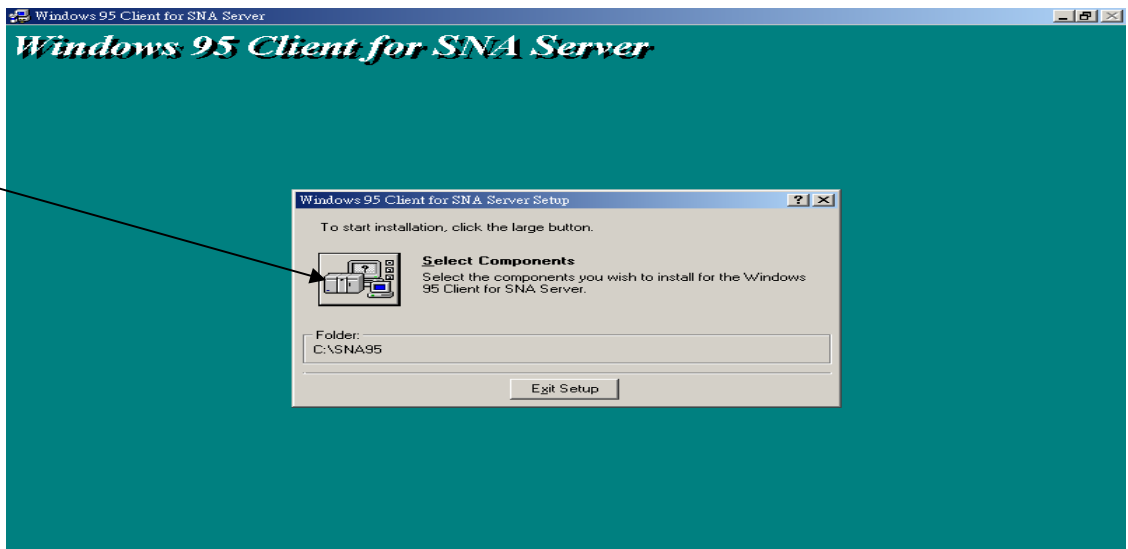
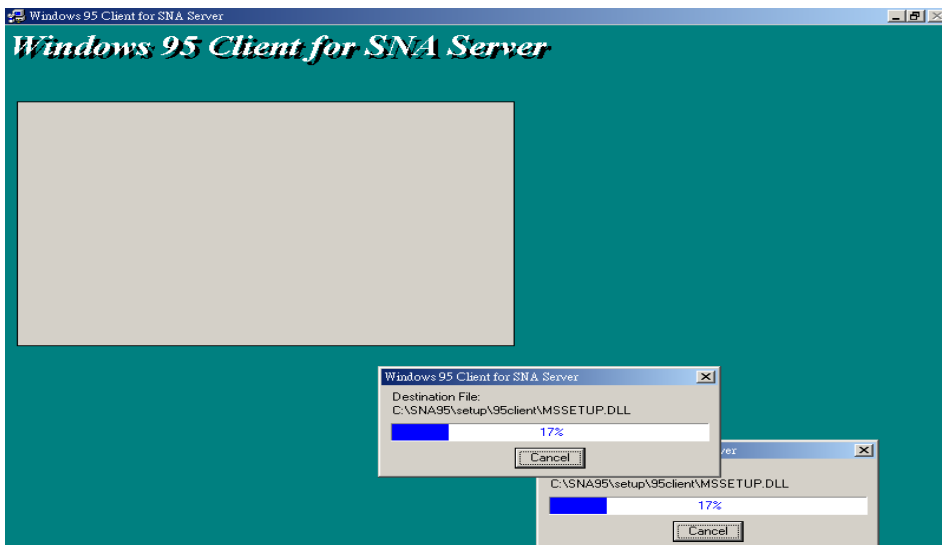
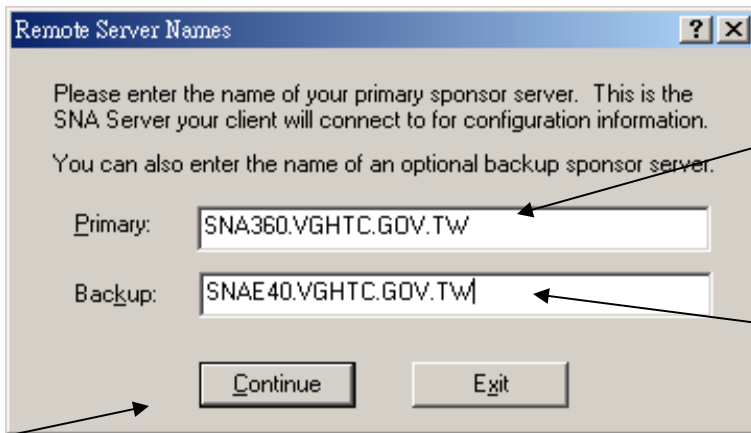
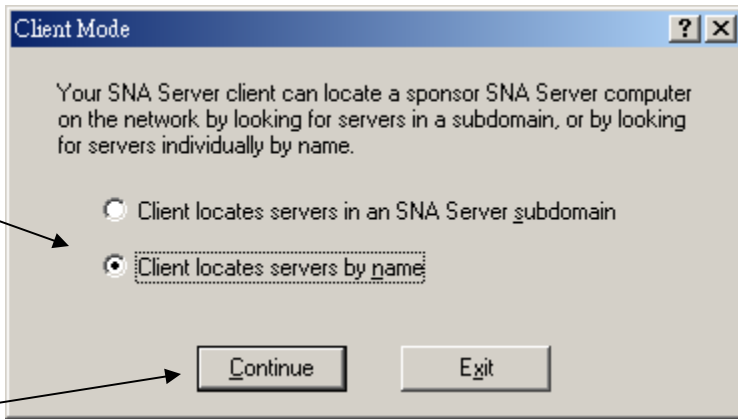
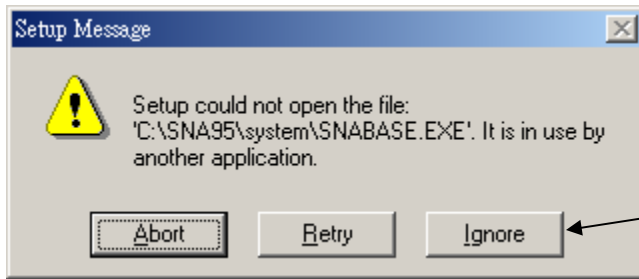


一 SNA95 安裝方式 (sna95 裡 SETUP.EXE)

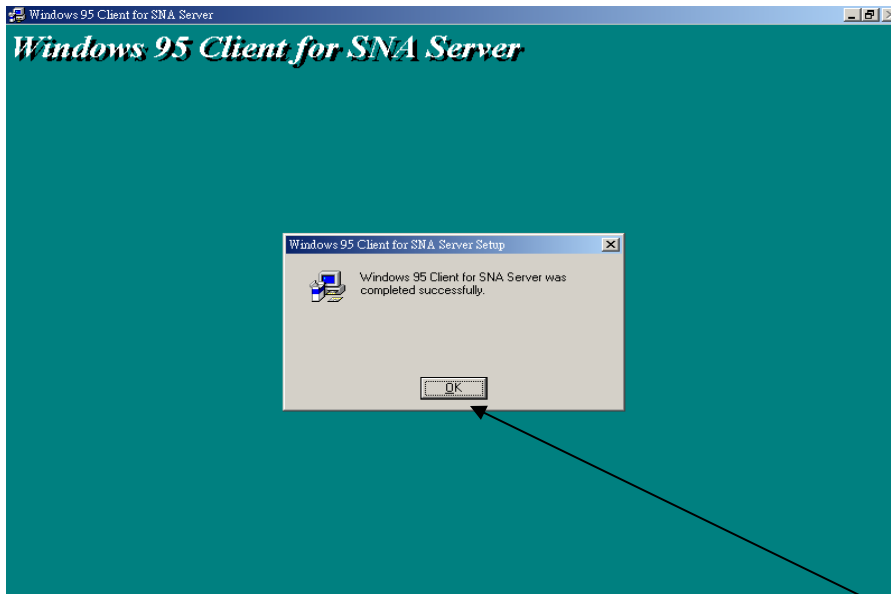




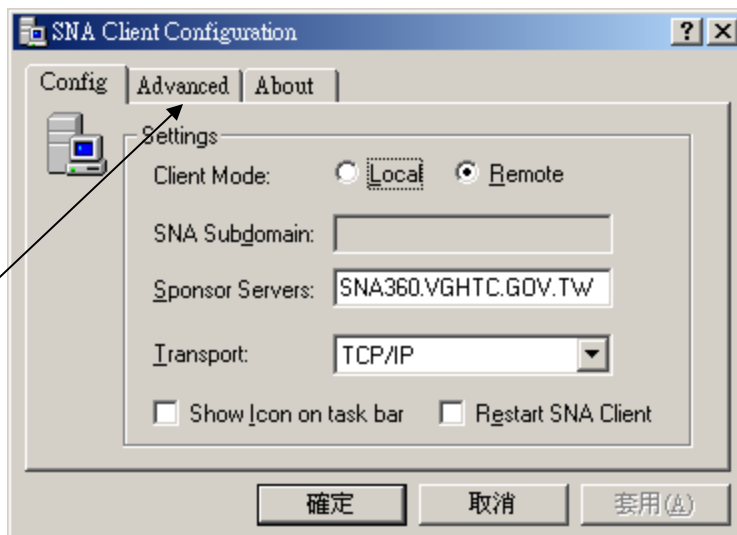


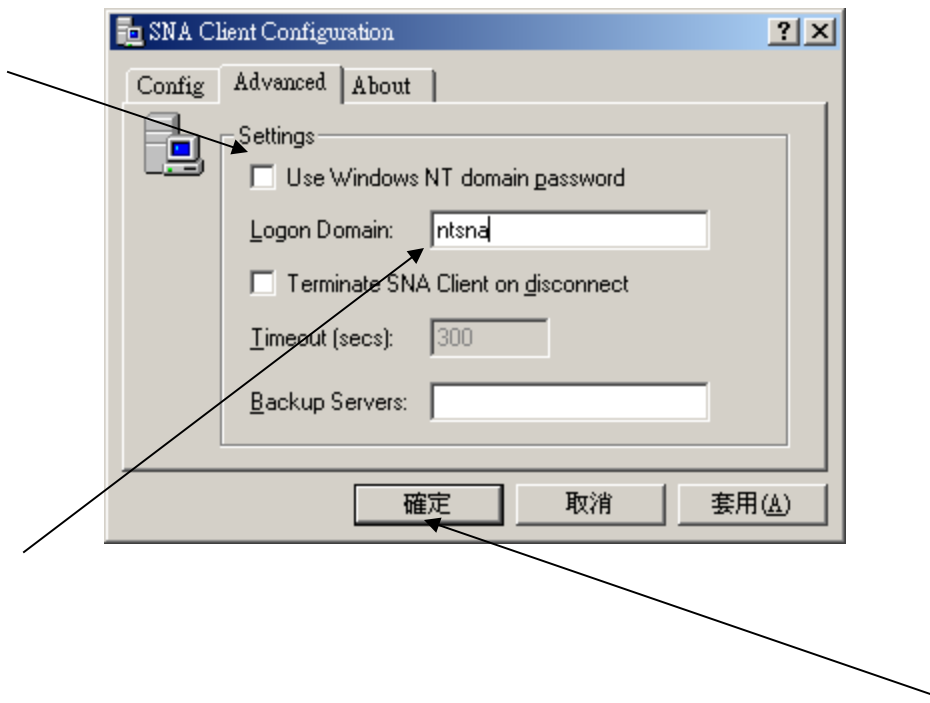


若有出現如左之訊息

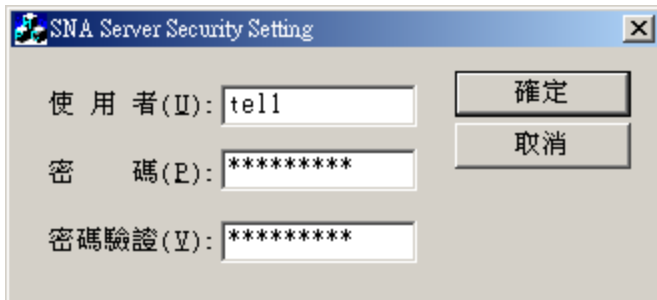


二 SNA95 設定 開始 - 程式集 - Microsoft SNA Server Client - SNA Client config(選點)





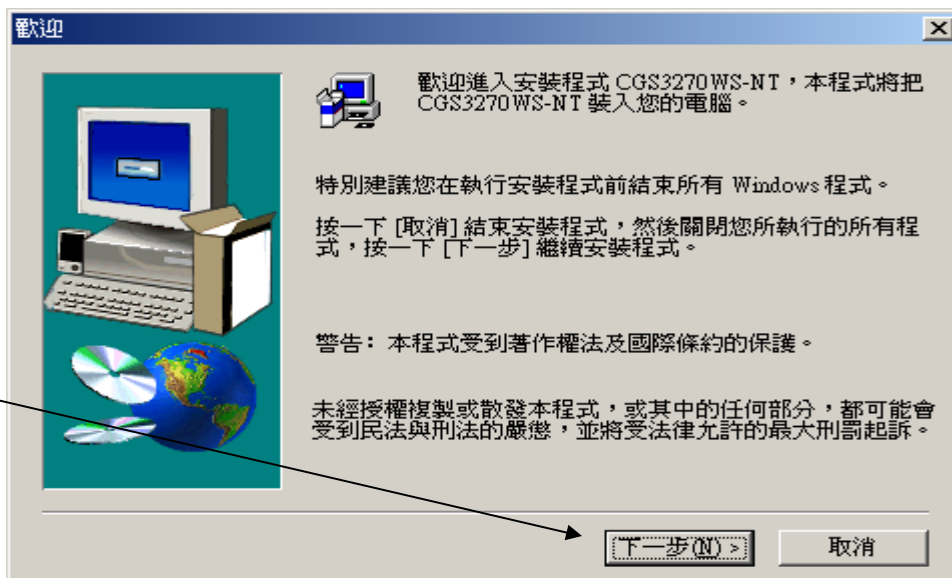
三 參數設定 (password 裡 SNAPWD.EXE)

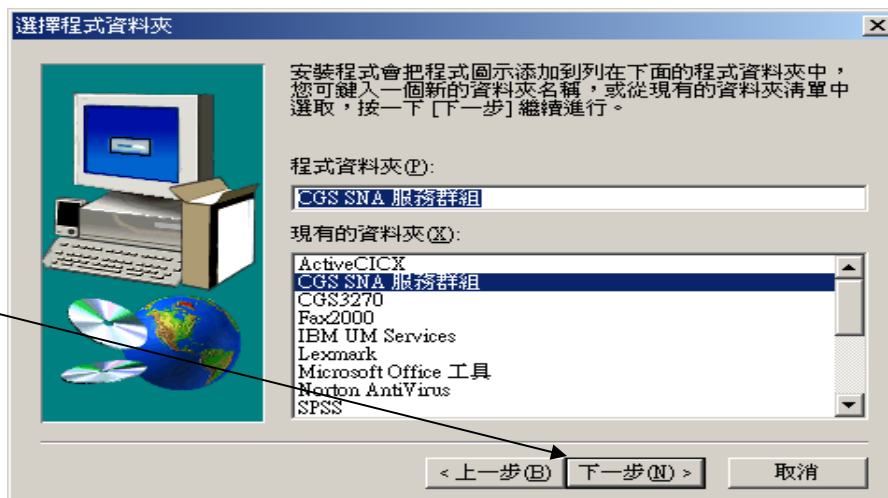
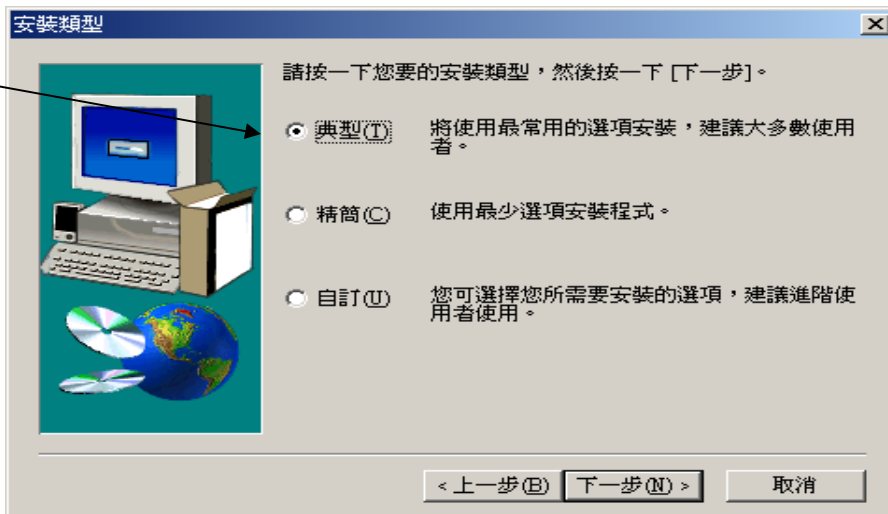


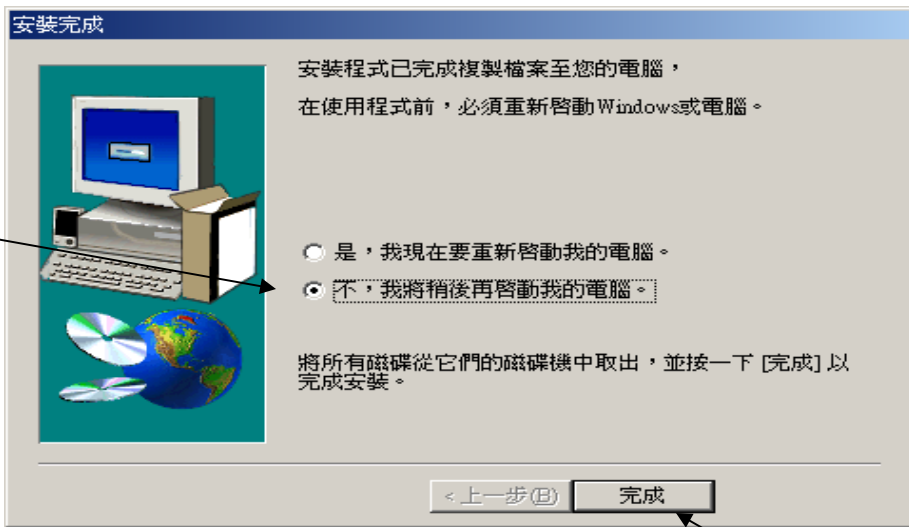
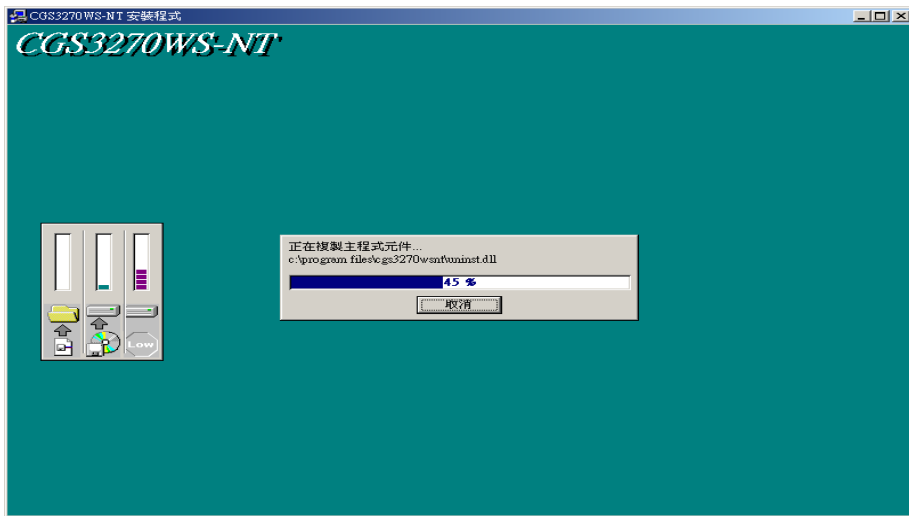
使用者：TEL1

密碼及密碼驗證：都是 tcvghtel1

四 Emulation 安裝 (CGS 裡的 Setup.exe)





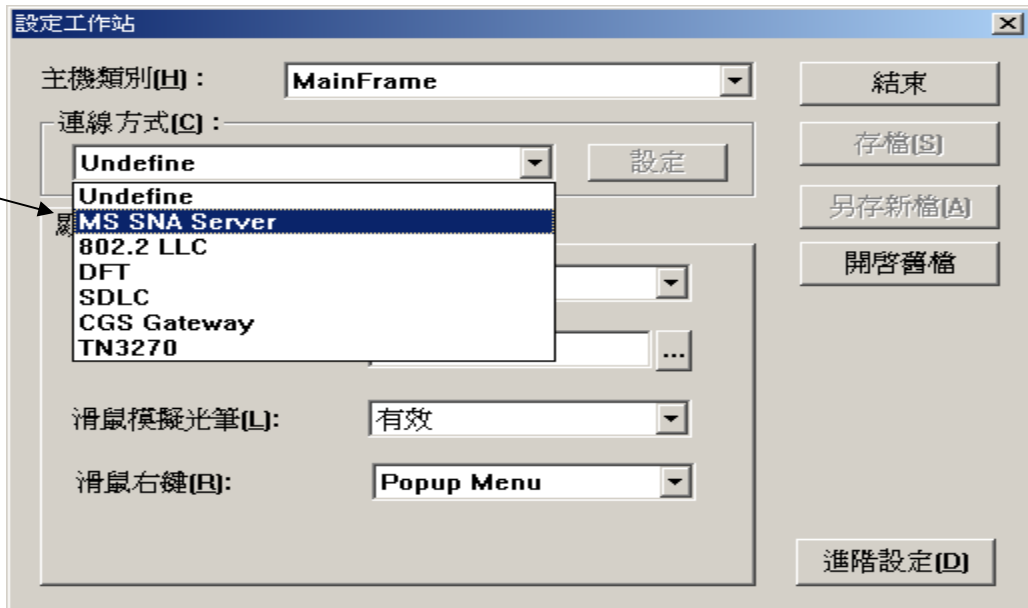


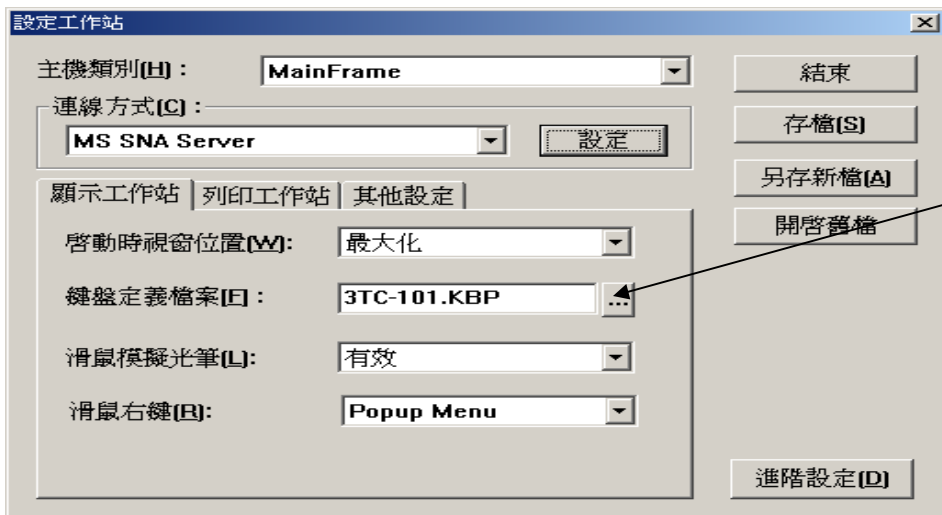
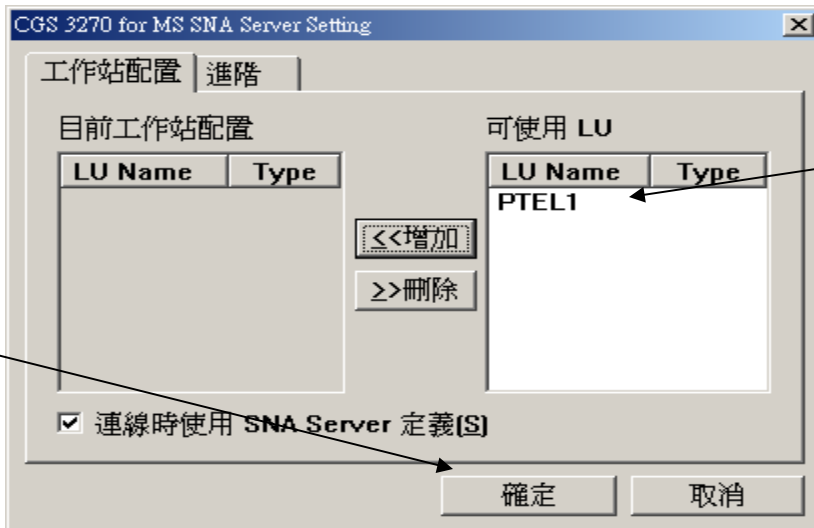
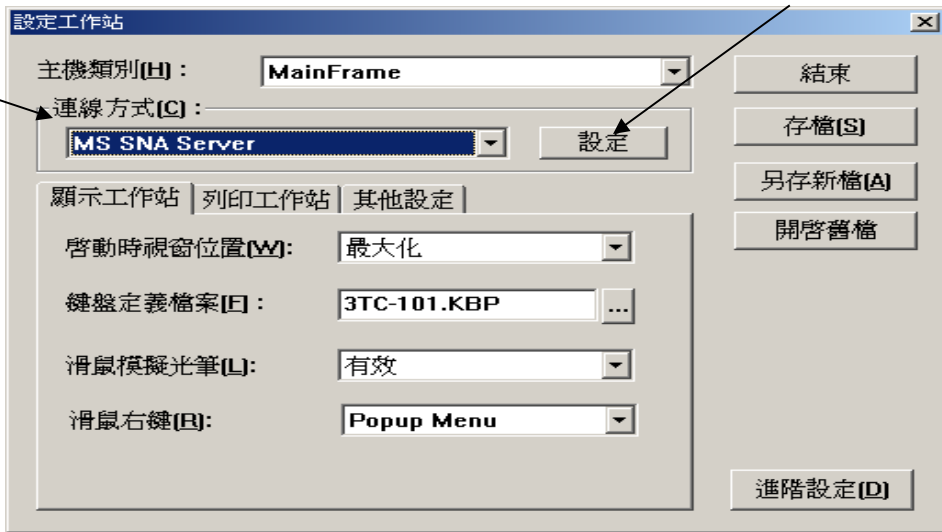
四 -1 參數設定二（依使用地點選擇）
進入此步驟前，請確定網路已經連通，
並可參考步驟六執行下述動作

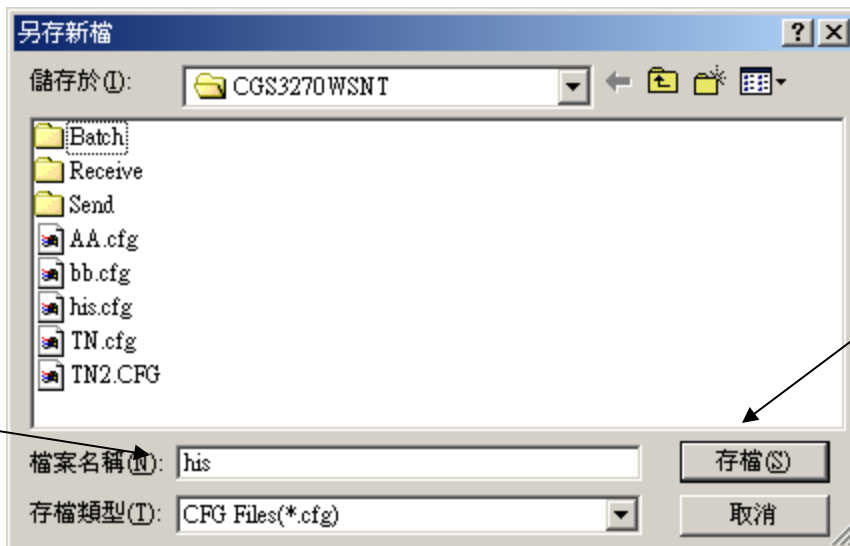
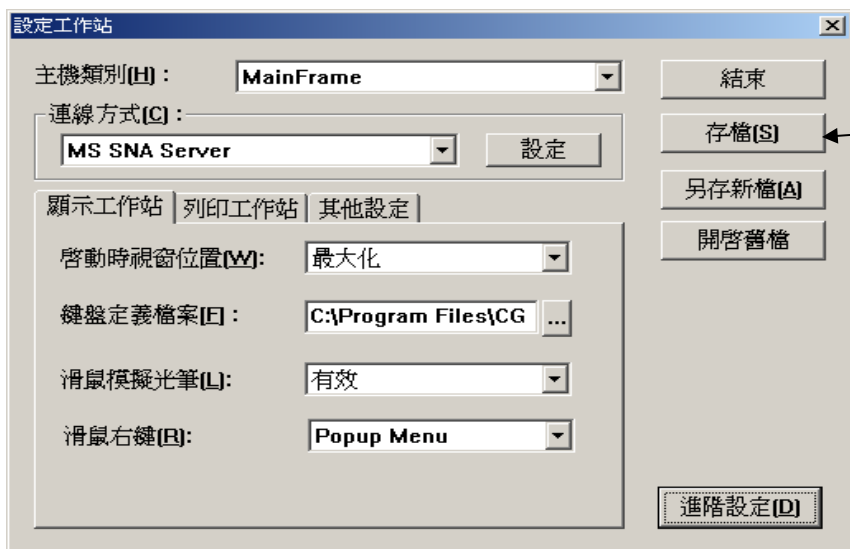
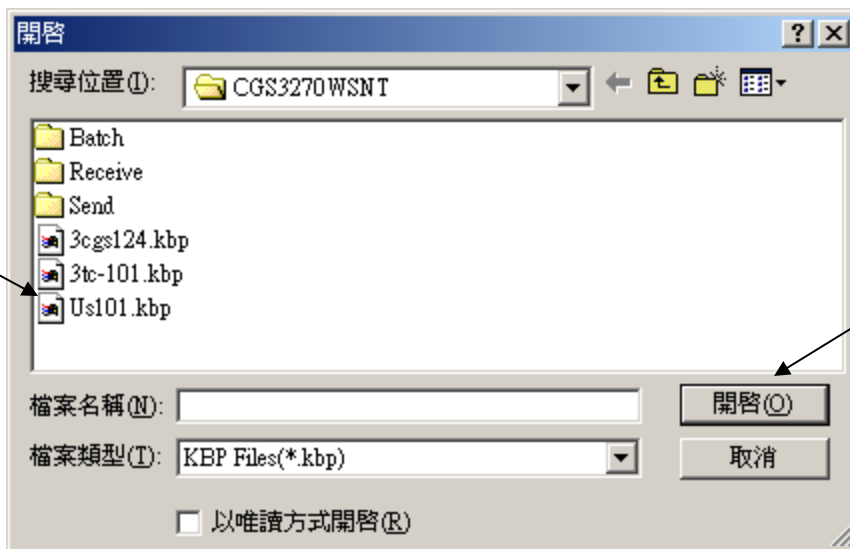
- A. 非院內請執行
SNA 32 bits (140.128.153.1).reg
- B. 院內網路請選點
SNAParameters(sna360).reg

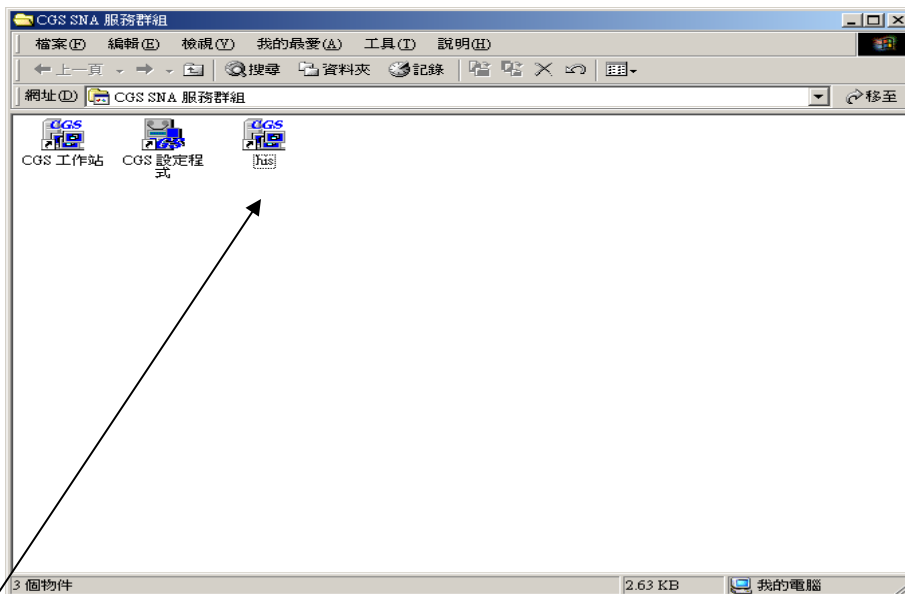
五 模擬程式設定

開始 - 程式集 - CGS SNA 服務群組 - CGS 設定程式









此即為所使用的 HIS 圖示
請於圖示上選點 Mouse 右鍵 - 複製 - 再到
桌面上點 Mouse 右鍵 - 貼上

六 使用注意事項

1. 功能鍵對應

Clear Key : Pause/Break Key

執行 Key : Right Ctrl Key

Cancel Key: Left Ctrl Key

若沒有上述的對應鍵，則需要另外再定義

2. 各種網路連接使用設定 (請先作以下動作後再執行 HIS)

* . 撥接到榮總使用請選點

SNAParameters(sna360 院內).reg

* . 非撥接到院內之其它網路提供者選點

SNA 32 bits (院外).reg

* . 北區眷舍宿網使用者選點

SNAParameters(sna360 院內).reg

* . 院內網路請選點

SNAParameters(sna360 院內).reg

執行會出現如下畫面

