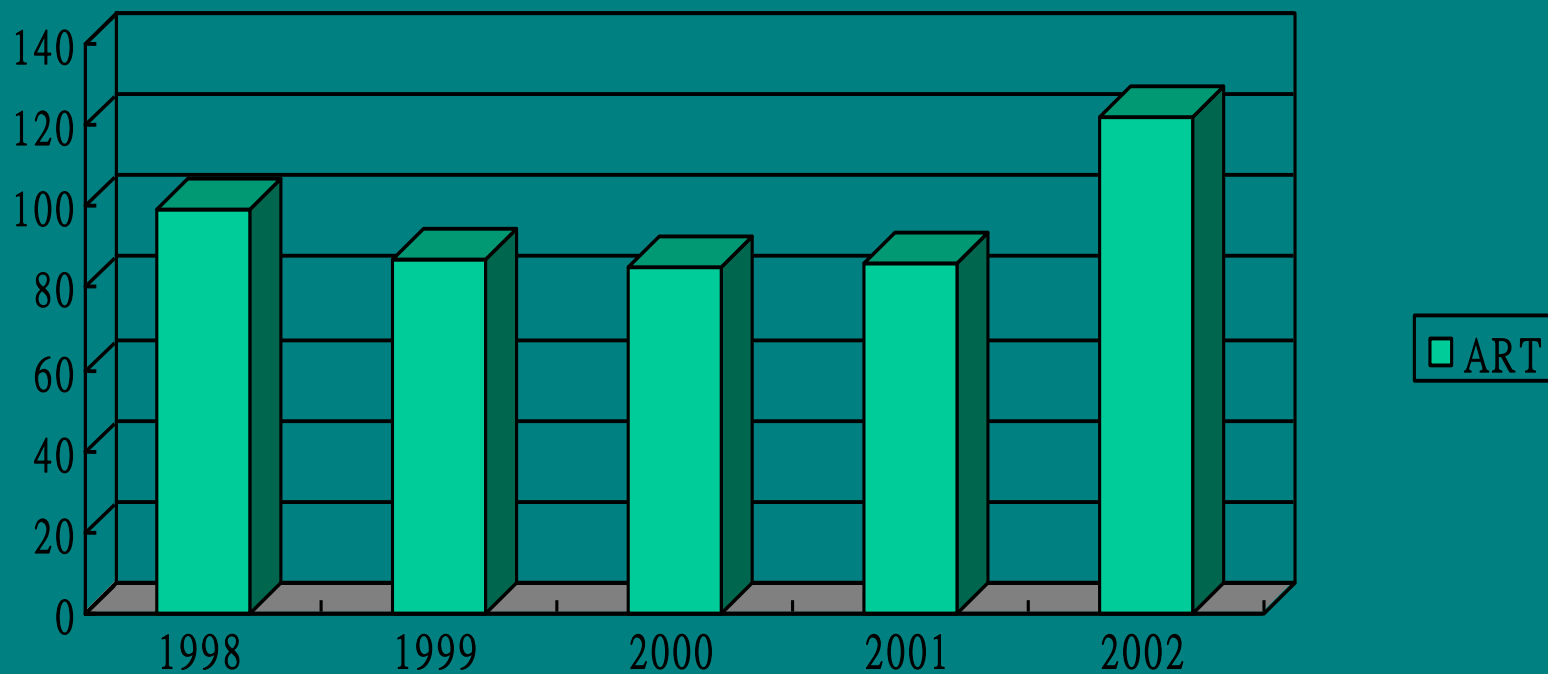


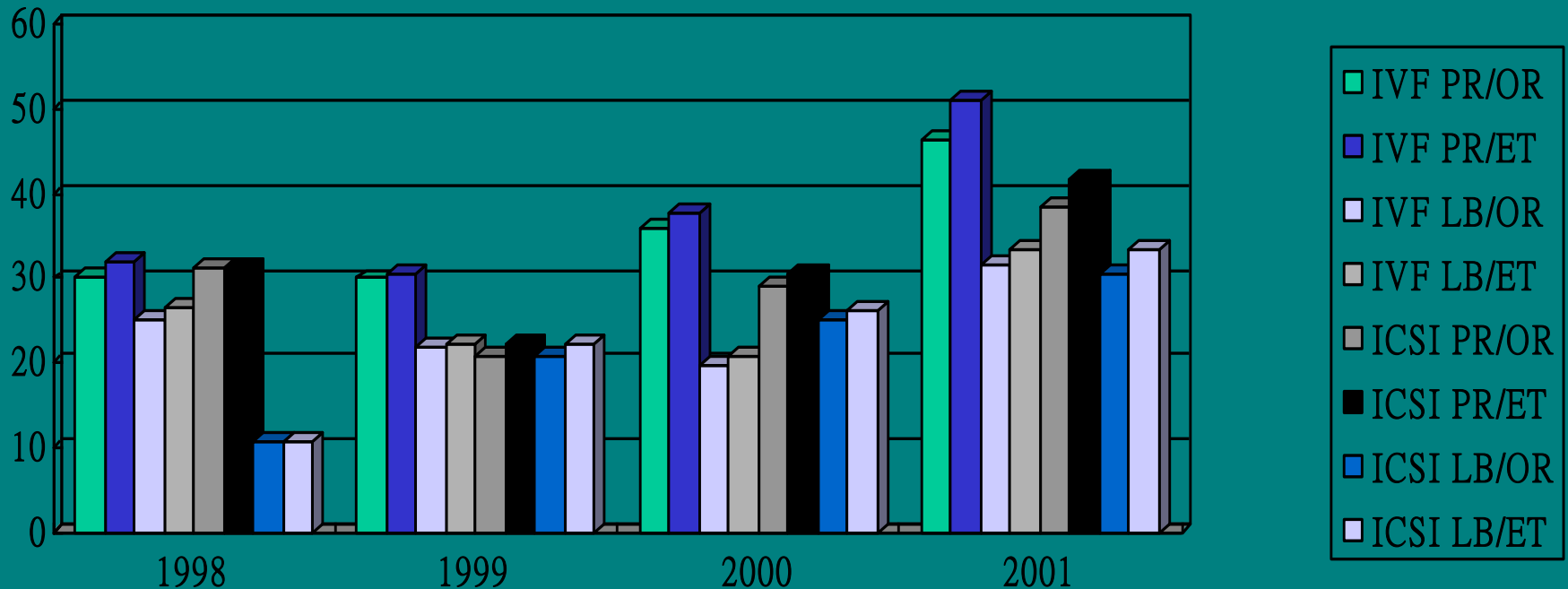
服務績效

- ❖ 以人工協助生殖中之試管嬰兒為例，下圖為近五年之施術人數

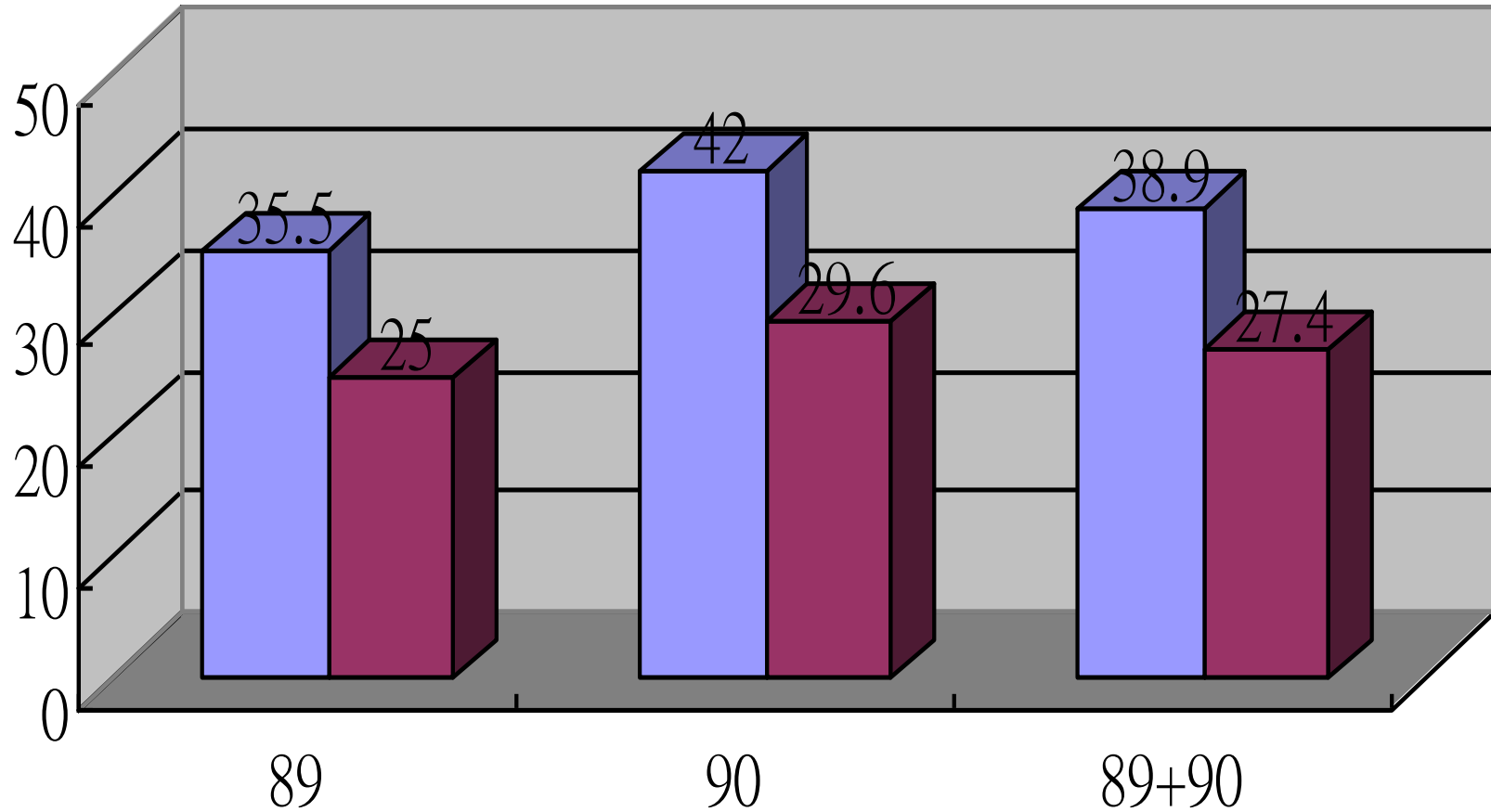


服務績效

❖ 下圖為近四年(1998-2001)施術之成功率〈PR：臨床懷孕率；LB：活產率；OR：每次取卵；ET：每次植入〉

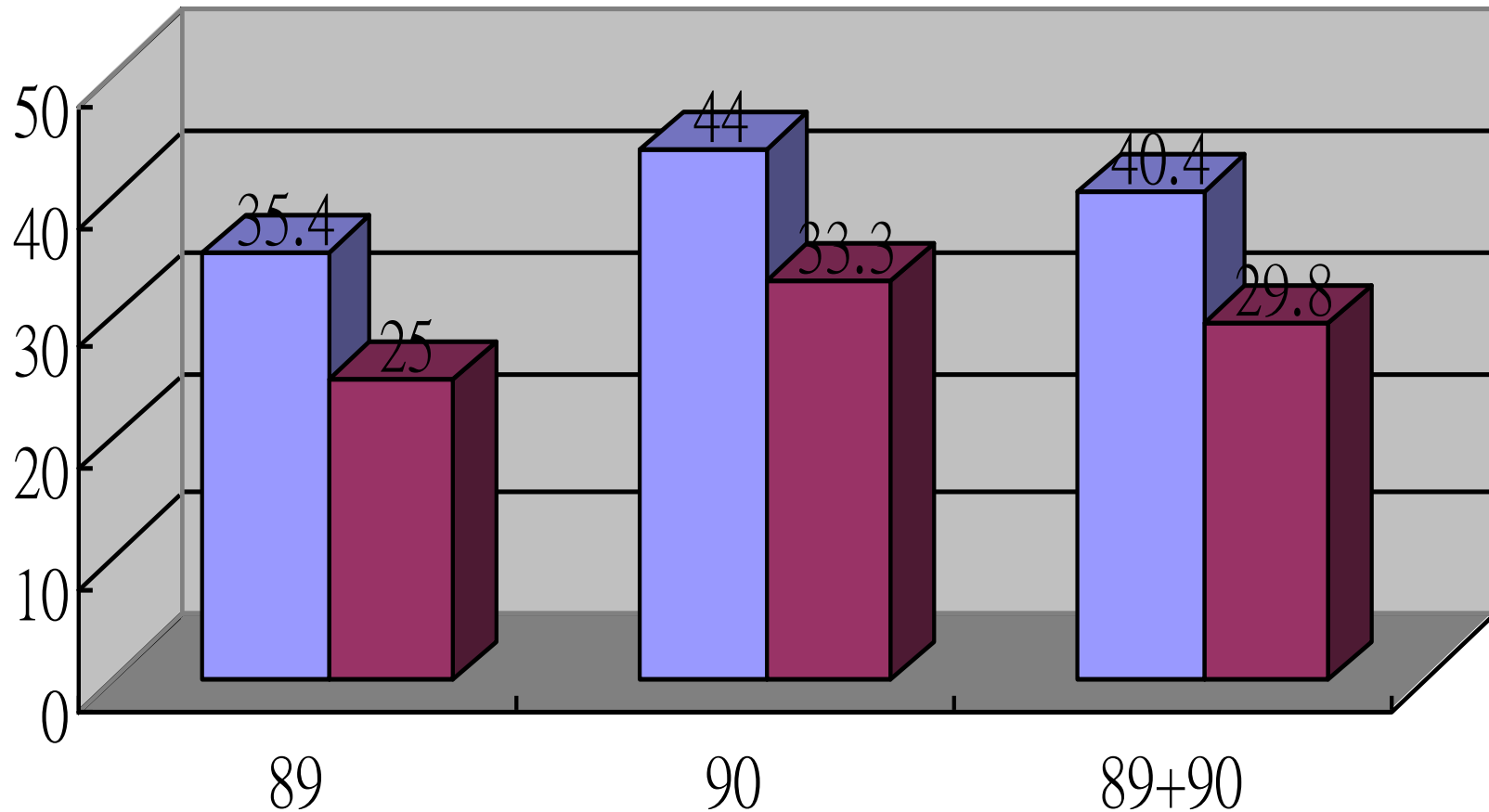


Pregnancy Rate(%)



■ clinical pregnancy ■ ongoing/delivery

Pregnancy Rate (Non-male, ≤ 40 y/o)



■ clinical pregnancy ■ ongoing/delivery