



NIKON CORPORATION
Instruments Company

Introducing Eclipse Ci

Ryohei Kuwada
Bio Science Sales Section
Sales Department

Asia, Oceania & Middle East Distributors Meeting
Sapporo, Japan

CONFIDENTIAL

Turning Vision into Information

Serving user needs

NIKON CORPORATION
Instruments Company



I want to,

observe images with bright and even illumination.....

easily capture images.....

reduce the number of lamp replacement.....

simplify operation with motorized accessories.....

use a variety of observation techniques

conduct observation in comfort.....

Concept

NIKON CORPORATION
Instruments Company



◆ **Eco Friendly**

◆ **Ergonomic**

◆ **Easy to use**

◆ **Versatile**

CONFIDENTIAL

3



“Feel the evolution”

New lineup

NIKON CORPORATION
Instruments Company



55i LED model



50i Halogen



Ci-E Motorized



Ci-L LED model



Ci-S Halogen



Ci-S

NIKON CORPORATION
Instruments Company



- **Halogen lamp illumination (6V/30W)**
- **ND4 filter, ND8 filter**
- **Image capture button**
- **Coaxial coarse/fine focusing handle**

Basic Model with halogen lamp



- **High-luminance and uniform LED illumination**
- Fly-eye optics
- **Image capture button**
- Coaxial coarse/fine focusing handle

Manual model with LED illumination



Ci-E

NIKON CORPORATION
Instruments Company



- **High-luminance and uniform LED illumination**
- **Fly-eye optics**
- **Image capture button**
- **Motorized nosepiece**
- **Motorized swing-out condenser**
- **Remote control pad**
- **Auto light intensity memory and reproduction**
- **Coaxial coarse/fine focusing handle**

Motorized model with LED illumination



Concept

NIKON CORPORATION
Instruments Company



◆ **Eco Friendly**

◆ **Ergonomic**

◆ **Easy to use**

◆ **Versatile**

CONFIDENTIAL

9

I want to reduce the frequency of lamp replacement.....

Eco-illumination

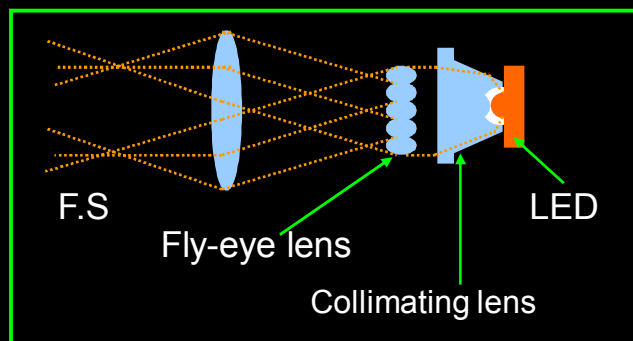
1. High-luminance and uniform LED illumination

Life expectancy 60,000 hours

2. Fly-eye optics

Low light loss (86%)

High uniform illumination



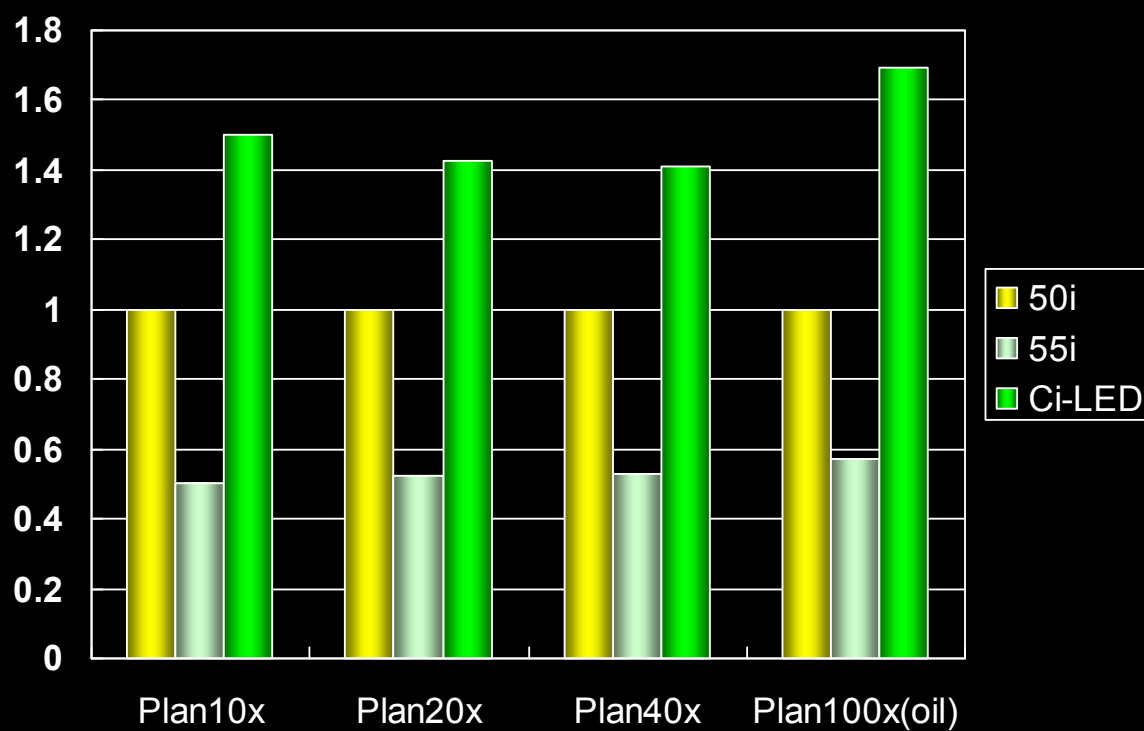
3. Extended observation methods by LED.

Phase contrast

Simple and sensitive color polarizing observation

Brightness of new LED illumination

NIKON CORPORATION
Instruments Company



12

I want to use the microscope more comfortable.....

Coaxial coarse/fine focusing knob

Filter cassette holder

Low stage configuration
(Nosepiece spacer)

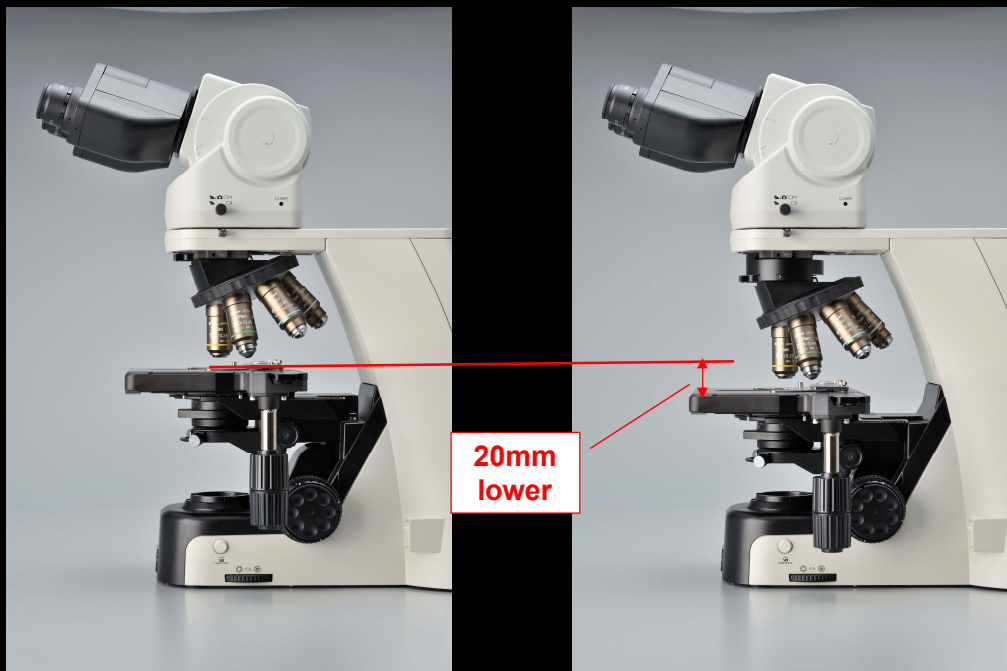
Ergonomics

Height adjustable stage handle

Ergo Binocular tube

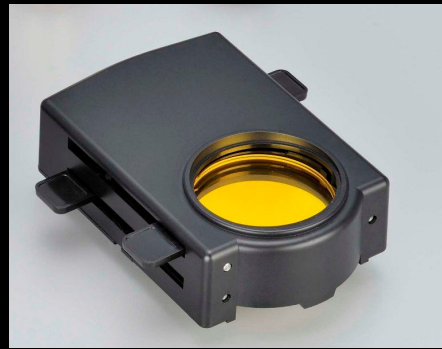
Eye level riser

Low stage configuration (Nosepiece spacer)



Filter cassette holder

- Holds 3 x 45mm filters (3mm thick max)
- ND2, 4, 8, 16 & GIF



Coarse/Fine focusing on R/L

- Focusing knobs can be attached on R or L by magnet on demand.
- Refocusing knob
 - Coarse focus clamp ring



I want to take images more easier.....

L3

Image capture button

Easy to use

Motorized swing-out condenser

Ci-E remote control pad

Image capture button

- Easy image capturing.
- Available with all the Ci models.

Capture button



DS-L3

- Touch panel
- User friendly GUI.
- Scene modes are available.



Ci-E remote control pad

- Automatic light intensity control.
- Toggle mode. (10x/40x)



Motorized swing-out condenser

- The white top-lens
- linking with the rotation of the nosepiece.



I want to verify of observation techniques

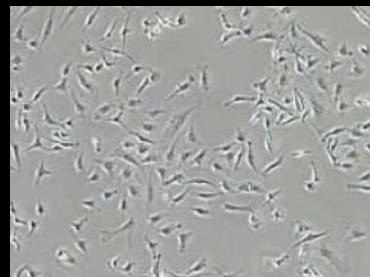
Phase contrast, simple and sensitive
color polarizing observation

Versatile

Epi-Fluorescence attachment

Phase contrast, simple pol and sensitive color pol observation

- Eco-illumination LED for phase contrast and pol observation (Ci-E/L).
- Analyzer slider



Epi-Fluorescence attachment

- Noise terminator
- ND4/ND8/ND16 (built-in)



Design

NIKON CORPORATION
Instruments Company



- **Elegant curve – RYUSEN (流線)**
- **User-friendly shape - 3D ERGO**
- **Cleanliness**



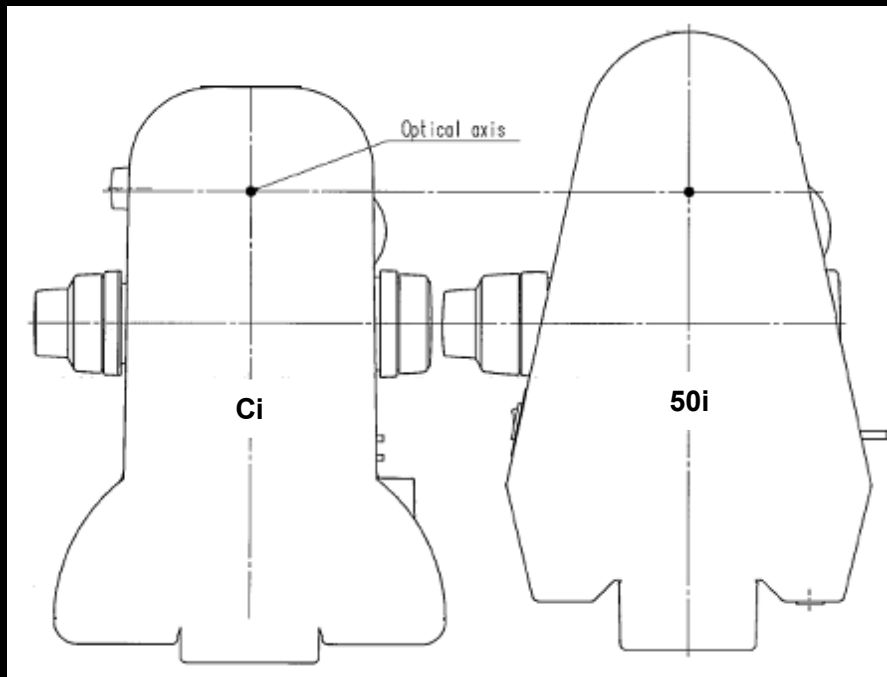
21

Ci vs. 50i

NIKON CORPORATION
Instruments Company



**Smaller footprint with more room in front of base
requires less table space**



Markets

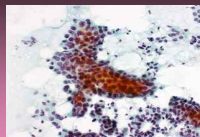
NIKON CORPORATION
Instruments Company



Cytodiagnostic

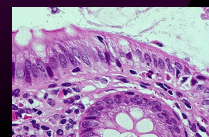
⇒Examination for uterine cancer,
tuberculosis (phlegm, urine)

Ascites
cytology
Pap stain.



Pathology

⇒Definitive diagnosis and
cause investigation of
cancer , disease. (affected
area of tissue)



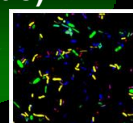
Blood, Bacteria

⇒Diagnosis of blood and
fungus. (blood, skin)



Chromosome, gene

⇒Congenital, malignant
tumor (amniotic fluid,
tumor tissue)



23

Target user

NIKON CORPORATION
Instruments Company



Model	Point to highlight	Target user
<i>Ci-E</i> <i>Ci-L</i>	•Eco-illumination (high-intensity LED illumination)	➤Laboratory technicians ➤Users working with pathology
<i>Ci-E</i>	Motorized nosepiece •Auto light intensity reproduction	➤Users who want to conduct a number of cytoscreening and clinical examinations.
<i>Ci-E</i> <i>Ci-L</i> <i>Ci-S</i>	•Ergonomic binocular tube •Eyelevel riser •Height-adjustable stage handle	➤Users who want to conduct long-term microscope observations with cytoscreening and clinical examinations.

Target user

NIKON CORPORATION
Instruments Company



Model	Point to highlight	Target user
<i>Ci-E</i> <i>Ci-L</i> <i>Ci-S</i>	Compact size (compared with the conventional BX43)	➤ Any customer
<i>Ci-E</i> <i>Ci-L</i>	•LED & Phase contrast	➤ Dermatologists - phase contrast microscopy.
<i>Ci-E</i>	•Touch panel operation of microscope & camera –DS-L3 –NIS-Elements –Epi-fluorescence attachment	➤ Basic research. Universities
<i>Ci-E</i> <i>Ci-L</i> <i>Ci-S</i>	•Polarization capability –Simple POL –Sensitive color POL	➤ Urinary sediment examinations.

Comparison

NIKON CORPORATION
Instruments Company



Maker		Nikon	Zeiss	Leica	Olympus
Model name		<i>Ci-E, Ci-L, Ci-S</i>	<i>Axio Scope A1</i>	<i>DM1000/2000 DM2500/3000</i>	<i>BX43</i>
Basic performance & Ergonomics (Operativity)	Illumination (Automatic adjustment)	YES Motorized operation	NO	NO	YES Manual operation
	Ergo body tube	Good + Tilt angel 10-30 deg + Tele length 40mm. + Height 55-100 mm - With no level	Poor -With no angle -With no tele +50mm in height +50mm of levels	Poor +Tilt adjustment -With no tele -With no height -With no level	Good +Tilt angle 0-27 deg -With no tele +45mm in height +55mm of levels
	Image capture button	YES	NO	NO	YES
	Operation pad	YES Free arrangement	NO	YES Main part fixation	NO
Digital camera	Ergo tube correspondence	YES	YES	YES	NO



NIKON CORPORATION

Turning Vision into Information